



**The Dolomite Centre Ltd.**  
 Unit 1, Anglian Business Park, Orchard Road,  
 Royston, Hertfordshire, SG8 5TW, UK  
**T:** +44 (0)1763 242491  
**F:** +44 (0)1763 246125  
**E:** dolomitesales@syrris.com  
**W:** www.dolomite-centre.com

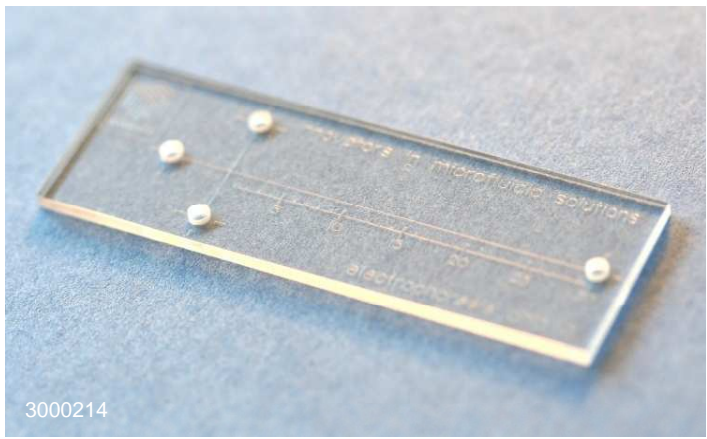
**The Dolomite Centre Limited**  
 Registered office: 27 Jarman Way,  
 Royston, Hertfordshire, SG8 5HW, UK  
 Company No. 05640084

# INFORMATION SHEET

Part name	Mitos capillary electrophoresis chip A	Part number	3000214
-----------	--	-------------	---------

## Description

The Mitos capillary electrophoresis chip A is designed for the separation of biological molecules using the method of capillary electrophoresis. Due to the high surface to volume ratio of the microchannels, high voltages can be applied without overheating the samples. The chip incorporates a cross-channel design with 20 µm channel depth and 30 mm length of channel for analysis of separation performance.

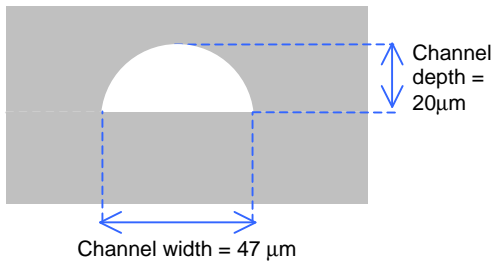


## Benefits

- Small sample volume
- High visibility
- Extremely smooth channel surface
- Wide pressure and temperature range
- Excellent chemical compatibility

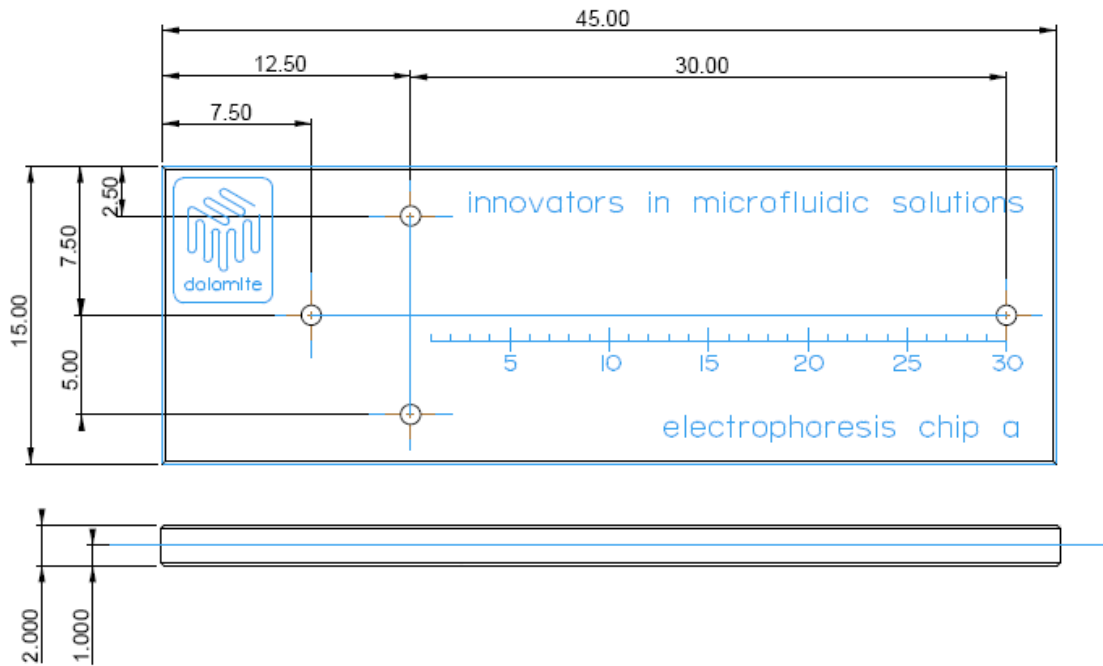
	Chip Specification	Value
1	Number of inputs	3
2	Number of outputs	1
3	Dimensions of Input/Output Holes (x4)	Ø1 mm x 1 mm depth
4	Channel Depth	20 µm
5	Channel Width	47 µm
6	Channel Length	30 mm (150 mm possible on custom chips)
7	Chip Width	15 mm
8	Chip Length	45 mm
9	Chip Total Thickness	2 mm
10	Material	Glass
11	Channel Surface Roughness	~5 nm

## Channel geometry



Left: The isotropically etched channel geometry

Below: The chip dimensions



## Custom options

The capillary electrophoresis chip can be fabricated with channel depth between 250nm – 300µm. The thickness of the top and base layers can be varied between 150µm - 5mm. The chip can also be fabricated from quartz (fused silica) if required.

Dolomite provide custom electrophoresis chip designs with straight channels up to 150mm in length.

## Optical Transmission

