



The Dolomite Centre Ltd.
 Unit 1, Anglian Business Park, Orchard Road,
 Royston, Hertfordshire, SG8 5TW, UK
T: +44 (0)1763 242491
F: +44 (0)1763 246125
E: dolomitesales@syrris.com
W: www.dolomite-centre.com

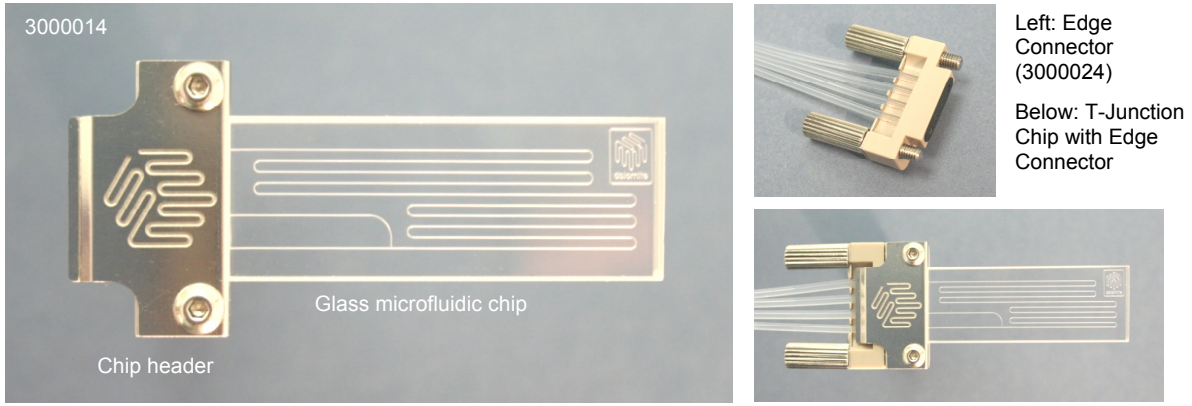
The Dolomite Centre Limited
 Registered office: 27 Jarman Way,
 Royston, Hertfordshire, SG8 5HW, UK
 Company No. 05640084

INFORMATION SHEET

Part name	Mitos T-Junction Chip with Header	Part number	3000014
-----------	-----------------------------------	-------------	---------

Description

The T-Junction Chip is a glass microfluidic device designed for a range of applications including mixing fluids, microreactions and droplet formation. The chip is supplied with a chip header (below). The header allows connection to the Dolomite Edge Connector (part number 3000024).



Benefits

- Compact
- Low dead volume
- Quick connect/disconnect
- High visibility (excellent access for optics)
- Extremely smooth channel surface
- Wide temperature and pressure range
- Low cost
- Excellent chemical compatibility

	Chip Specification	Value
1	Number of inputs	2
2	Number of outputs	1
3	Internal channel cross-section	100 µm x 110 µm (depth x width)
4	Channel length after T-junction	278 mm (feed channels = 20 mm and 22 mm)
5	Volume of channel after T-junction	2.5 µl
6	Back pressure with 100µl/min flow (water)	1.5 Bar
7	Surface roughness of channels (R _a)	5 nm
8	Chip size	45.0 mm x 15.0 mm
9	Chip top layer thickness	2.0 mm
10	Chip base layer thickness	2.0 mm
11	Operating pressure	100 Bar (30 Bar with chip header 3000024)
12	Operating temperature	400° C
13	Material	Glass
14	Fabrication process	HF etching and thermal bonding



Channel cross-sectional profile

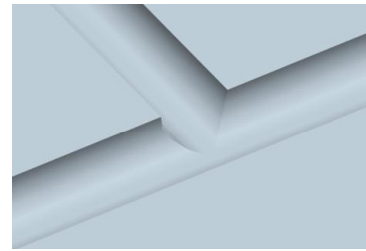
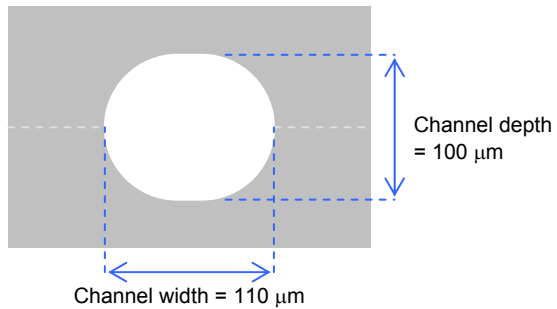


Image of T-junction (base layer only)

Custom options

The channel may be etched to different depths, for example from 20 μm x 30 μm up to 700 μm x 710 μm (depth x width). The top layer or base layer can also be left un-etched giving a semi-circular channel cross-section.

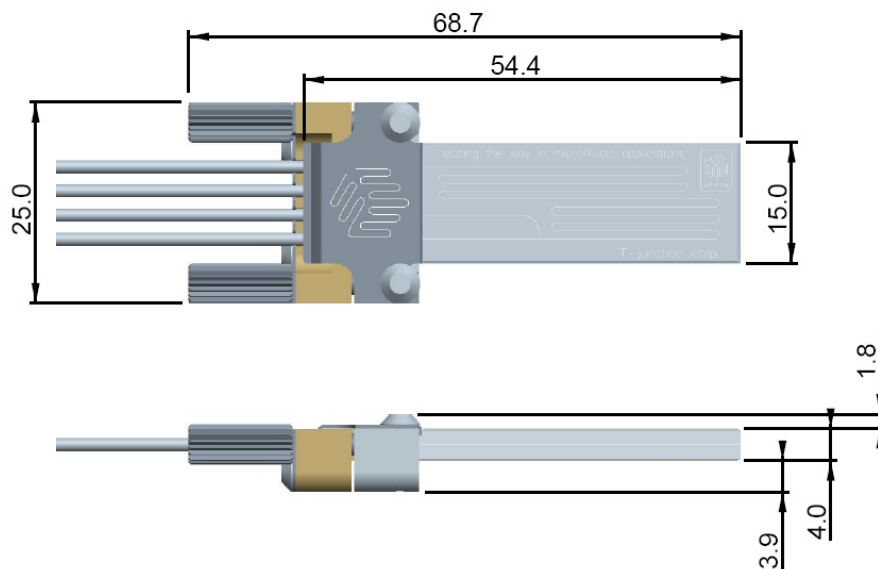
Custom channel layouts can also be specified.

Custom surface coatings

The channel surface is hydrophilic. The chip can also be supplied with:

- Hydrophobic coating on channel surfaces
- Platinum coating on channel surfaces

Edge connector geometry



Optical transmission

